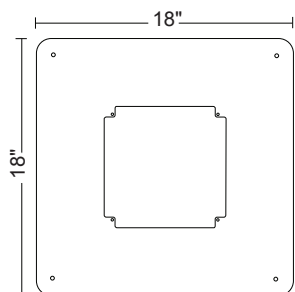
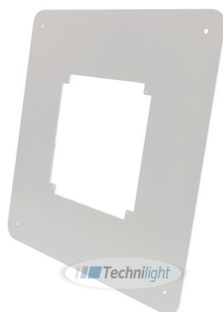


Fixing aluminium plate available.
Not included.



J15647A



Pictures for illustration purpose only



Specifications TLDL40N

Electrical Specifications

Model No.	TLDL40N
Power (W) $\pm 10\%$	40 W (DLC: 43.53 W)
Input Voltage (V)	AC100-277V, 50/60Hz
Efficacy	127.06 lm/W
Power Factor (PF)	0.9356

Photometric Specifications

CRI	72.9
CCT	4000 K
Beam angle	105°
Light Output	5 530 lm
Dimmable	1-10V & Triac

Mechanical Specifications

IP Rating	IP65
Material	Die cast aluminium
Lens	Flat PC
Net Weight	10.72 kg
Product size (mm)	226 x 226 x 127 mm
Product size (inch)	$\pm 8.9 \times 8.9 \times 5$ in
Operating Humidity	10% - 90%
Operating Temperature	-35°C ~ 45°C

Product Description:

1. Die cast aluminium housing for rugged mounting and heat dissipation.
2. Surface mount with quick installation kits and an aluminium plate.
3. No toxic chemicals/ROHS compliant.
4. Save up in electricity consumption compared to fluorescent lighting fixture.
5. Warranty: 5 Years.
6. It could be fitted with sensor.
7. 2700K and 5700K available on special request.
8. Color: white.

Applications:

Gas stations, workshops, warehouses, factories, markets, etc.

Designed for wet locations indoor and outdoor.

Similar product	Color	W	Lumen
TLDL80N	4000 K	80 W	10 179 lm