



Sign tube IP65

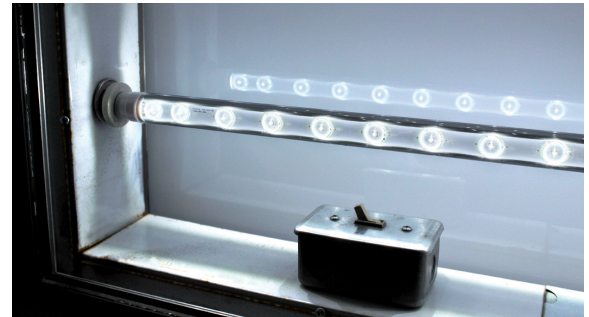
Specifications:

- For new installation or retrofit
- Light distribution of 180 °
- R17D rotatable connector
- 100 / 277 V Power supply by both ends
- More than 50% energy saving
- CCT: 6 500 K
- Non-Dimmable

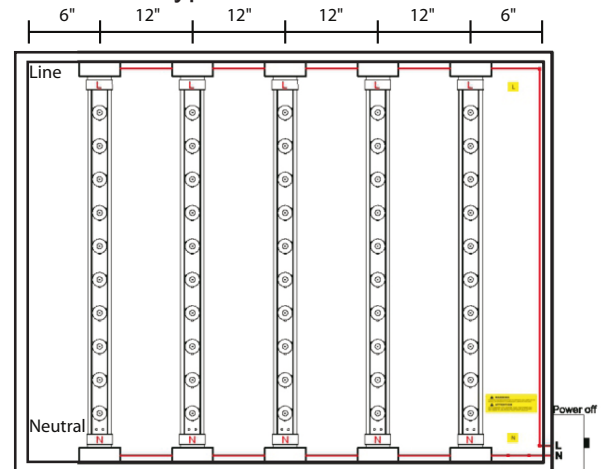
For luminous sign cabinet illuminated from the inside by translucence.

All standard lengths available for single and double face sign.

Aluminum and polycarbonate construction.



Typical installation



Double face tube Voltage: 100 / 277 V | CRI ± 80 | Power Factor ± 0.92

Model	Watt	Lm	Lm/W	Replace	Length	Qty per box
TLT8S18D10C	10	1 070	107	F18 / HO	404 mm	25 pcs
TLT8S24D12C	12	1 424	118.67	F24 / HO	556 mm	25 pcs
TLT8S30D15C	15	1 686	112.4	F30 / HO	708 mm	25 pcs
TLT8S36D18C	18	2 223	123.5	F36 / HO	861 mm	25 pcs
TLT8S42D21C	21	2 508	119.43	F42 / HO	1 012 mm	25 pcs
TLT8S48D24C	24	2 745	114.38	F48 / HO	1 164 mm	25 pcs
TLT8S60D28C	28	3 240	115.71	F60 / HO	1 469 mm	25 pcs
TLT8S64D32C	32	3 787	118.34	F64 / HO	1 572 mm	15 pcs
TLT8S72D36C	36	4 312	119.78	F72 / HO	1 774 mm	15 pcs
TLT8S84D44C	44	4 928	112	F84 / HO	2 078 mm	15 pcs
TLT8S96D48C	48	5 700	118.75	F96 / HO	2 385 mm	15 pcs
TLT8S108D48C	48	5 700	118.75	F108 / HO	2 687 mm	15 pcs
TLT8S117D52C	52	6 150	118.27	F117 / HO	2 915 mm	15 pcs
TLT8S120D52C	52	6 150	118.27	F120 / HO	2 991 mm	15 pcs

Informations are subject to change without notice. Pictures for illustration purpose only.